

HealthMate

Promoting Life at the Cellular Level

HealthMate is a unique formula that allows the dairy producers full advantages in every part of the digestive system that in turn aids in the overall health of the cow.

The health benefits that are seen by the use of HealthMate are better breeding performance, better immunity and immune response, along with benefits in milk yield and cow longevity. Some of the benefits that HealthMate gives take time to see, however some results are somewhat immediate.

In challenged herds dealing with salmonella, ecoli, and HBS, HealthMate proves to be the additive of choice due to its wide array of benefits that help reduce the negative affects of these challenges.

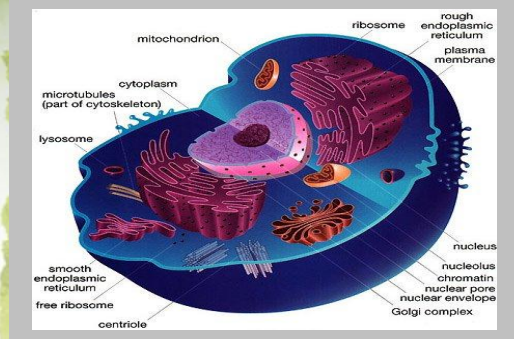
HealthMate is an ally in the dairy industry for helping increase profit potential in dairy herds across the United States.

HealthMate Promotes

- Feed efficiency
- Rumen function
- Feed intake
- Immune response
- Milk Yield

HealthMate Reduces

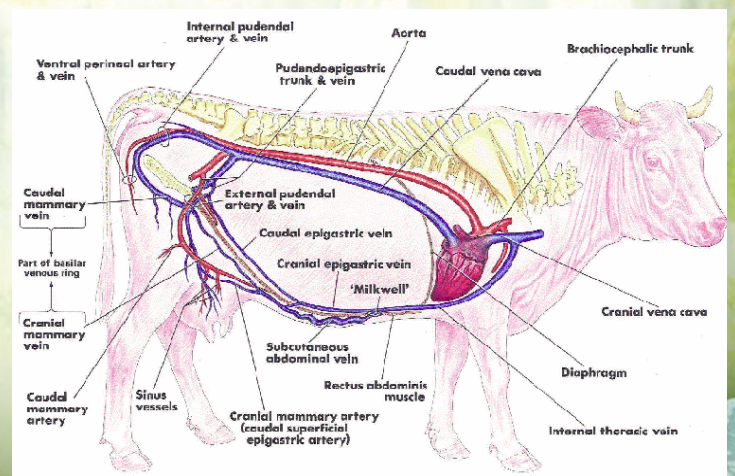
- Mycotoxin effect
- Incidence of diarrhea
- Mortality rates
- Mastitis



Animal Cell Diagram



Red Blood Cells



HealthMate

Product #9200

HealthMate provides room for more nutrition by replacing other additives that do not provide nutritional advantages.

Guaranteed Analysis

Lactobacillus Acidophilus.....	Not Less Than	5.6 Billion CFU/LB
Bifidobacterium Thermophilium.....	Not Less Than	2.4 Billion CFU/LB
Bifidobacterium Longum.....	Not Less Than	2.4 Billion CFU/LB
Enterococcus Faecium.....	Not Less Than	2.4 Billion CFU/LB
Bacillus Subtilis.....	Not Less Than	2.4 Billion CFU/LB
Saccharomyces Cervisiae.....	Not Less Than	280 Billion CFU/LB
Crude Protein.....	Not Less Than	32%
Sugars.....	Not Less Than	6%
Zinc.....	Not Less Than	1550 PPM

HealthMate will replace

- Mannon oligosaccharides (MOS)
- Fructo oligosaccharides (FOS)
- Direct fed microbials
- Clay Products
- Enzymes
- Protected Choline
- Omnigen
- ½ lb of protein
- Yeast

Ingredients

Extruded Soybeans, Mechanically Expelled Extruded Soybeans, Processed Grain Products, Hydrolyzed Yeast, Dried Aspergillus Oryzae Fermentation Product, Dried Aspergillus Niger Fermentation Extract Product, Dried Bacillus Subtilis Fermentation Product, Dried Lactobacillus Acidophilus Fermentation Product, Dried Enterococcus Faecium Fermentation Product, Dried Bifidobacterium Longum Fermentation Product, Dried Bifidobacterium Thermophilium Fermentation Product, Mannan Oligosaccharides, Hydrated Sodium Calcium Aluminosilicates, Dextrose, Polysaccharide Complex of Zinc, Polysaccharide Complex of Manganese, Polysaccharide Complex of Copper, Cobalt Sulfate, Vegetable Oil, High Grade Soy Lethicin, Polysorbate 80(an emulsifier), Natural Flavors, Artificial Flavors, Mineral Oil, persevered with Bulyated Hyroxytolunene and Ethoxyquin.

Feeding Instructions

Beef and Dairy Cattle: Feed ¼ to ½ pounds per head per day.
Fresh and Pre Fresh Dairy Cows: Feed ½ to ¾ Pounds per head per day.
Calves less than 800 Pounds: Feed ⅛ to ¼ Pounds per head per day.

Warning!:

Contains Copper. Do not feed to sheep.



Manufactured By:
Jasper Soy Processors LLC
220 West Wall Street
Jasper MN, 56144
Phone 507-348-3205
www.jaspersoyprocessors.com

Bulk or 50lb (22.68 kg) Net Weight

This product is made in a manufacturing facility that does not handle or store products containing animal proteins prohibited in ruminant feed.

HealthMate is not a drug and does not claim to cure or treat any disease